



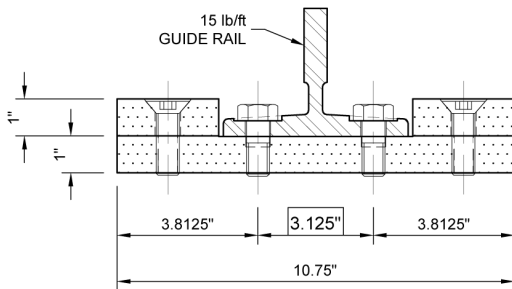
ACCESS
Elevator Supply
800-266-8654

is pleased to present the **Low-Profile Fishplate** made in the USA by Smart Elevator Tech, LLC.

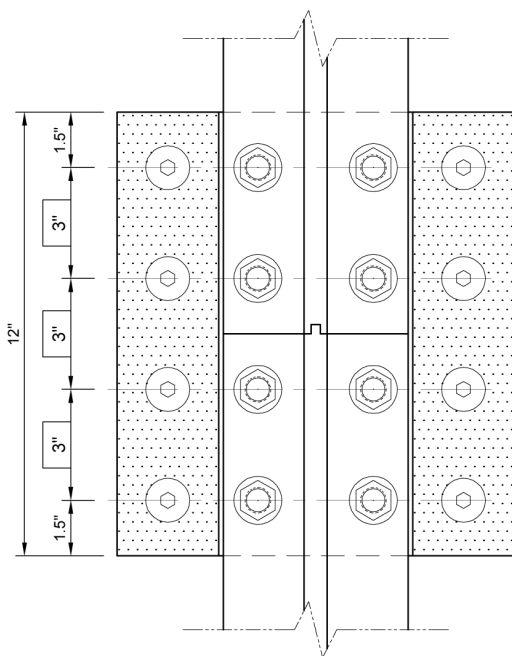
A Seismic Fishplate that requires only 1" clearance behind the guide rail

Low-Profile Fishplate™ is a Seismic Risk Zone 2 or Greater guide rail fishplate for 15 lb/ft guide rails engineered to fit tight clearances where traditional T-section or minimum clearance fishplates do not fit.

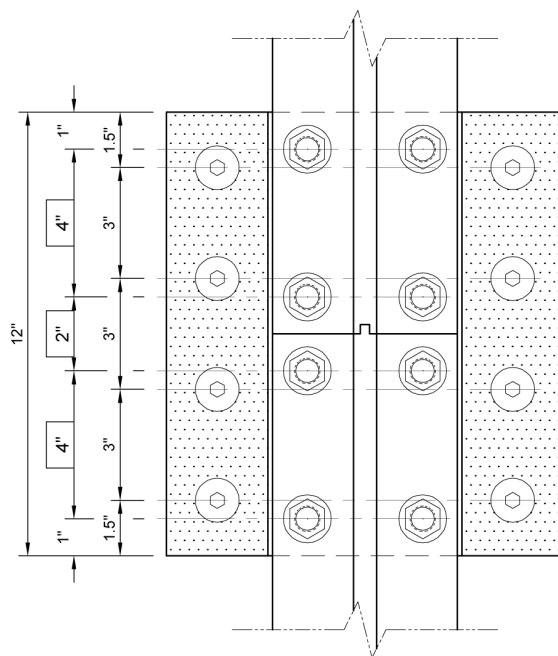
- 1" clearance back of guide rail to wall or beam.
- Fits **standard hoistway** for seismic and non-seismic installations or narrower hoistways for the same elevator capacities.
- Designed for **seismic retrofits** with tight clearance to existing walls & beams without removing the rail.
- Meets **ASME A17.1** - 1996 through 2008 including sections 2.23.7, 8.4.8.5 & 8.4.8.6. The section modulus and moment of inertia of the assembly is equal to or greater than the guide rail. Models **A & B** for two common rail end hole dimensions. Other hole spacing available by special order.
- Custom manufactured **ASTM A307** Grade A bolts comply with A17.1, section 2.23.2.1(b) & 8.4.8.6(h).
- Two bolt lengths available to accommodate both modern **counterbored rails** and older **non-counterbored rails**.
- **Certified** by a California licensed structural engineer, calculations available upon request.
- Proudly made in the **USA**.



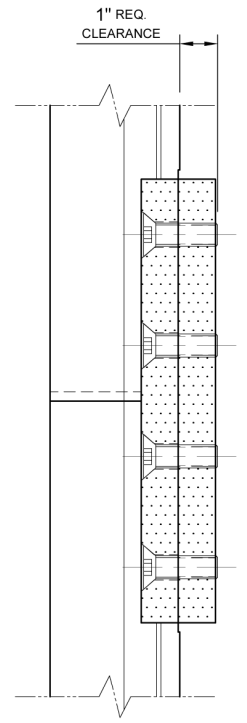
PLAN VIEW - MODEL A & B



FRONT VIEW - MODEL A



FRONT VIEW - MODEL B



SIDE VIEW

1 **LOW-PROFILE SEISMIC GUIDE RAIL FISHPLATE**
SCALE: 1:5
GUIDERAIL: 15# (T127-2/B or OTS #1)
SPECIFY: MODEL A or B

NOTE: VERIFY BOXED DIMENSIONS TO SELECT MODEL A or B TO SUIT YOUR GUIDE RAILS.